

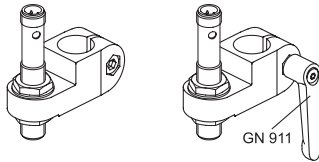
**MATERIAL**

Aluminium, epoxy resin coating, RAL 9005 black colour, matte finish.  
AISI 304 stainless steel screw and nut.

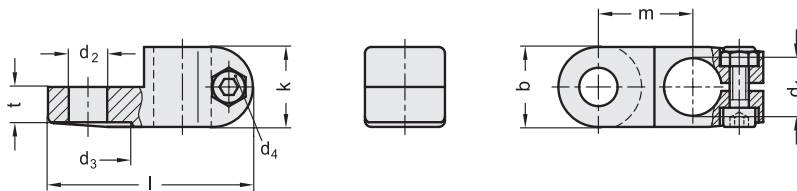
**FEATURES AND APPLICATIONS**

The assembly hole of GN 273.4 sensor holders allows an excellent match with tubes GN 990 (see page 1954).

The clamping screw d4 may be replaced by clamping kit GN 911 (see page 1958).



Conversion Table	
1 mm = 0.039 inch	
d1	
mm	inch
12	0.47
14	0.55
16	0.63
18	0.71



**METRIC**

Code	Description	b	d1	d2	d4	d3	k	l	m	t-0.5	d4 Clamping kit	⚖
GN.57606	GN 273.4-B12-B12-2-SW	25	12	12	M6	27	25	64	29.5	11	GN 911-M6-22	60
GN.57626	GN 273.4-B14-B12-2-SW	25	14	12	M6	27	25	64	29.5	11	GN 911-M6-22	60
GN.57646	GN 273.4-B16-B12-2-SW	25	16	12	M6	27	25	64	29.5	11	GN 911-M6-22	60
GN.57666	GN 273.4-B18-B12-2-SW	25	18	12	M6	27	25	64	29.5	11	GN 911-M6-22	60
GN.57616	GN 273.4-B12-B18-2-SW	25	12	18	M6	27	25	64	29.5	11	GN 911-M6-22	60
GN.57636	GN 273.4-B14-B18-2-SW	25	14	18	M6	27	25	64	29.5	11	GN 911-M6-22	60
GN.57656	GN 273.4-B16-B18-2-SW	25	16	18	M6	27	25	64	29.5	11	GN 911-M6-22	60
GN.57676	GN 273.4-B18-B18-2-SW	25	18	18	M6	27	25	64	29.5	11	GN 911-M6-22	60

- 1
- 2
- 3
- 4
- 5
- 6
- 7
- 8
- 9
- 10
- 11
- 12
- 13
- 14
- 15
- 16
- 17
- 18

Connecting clamps